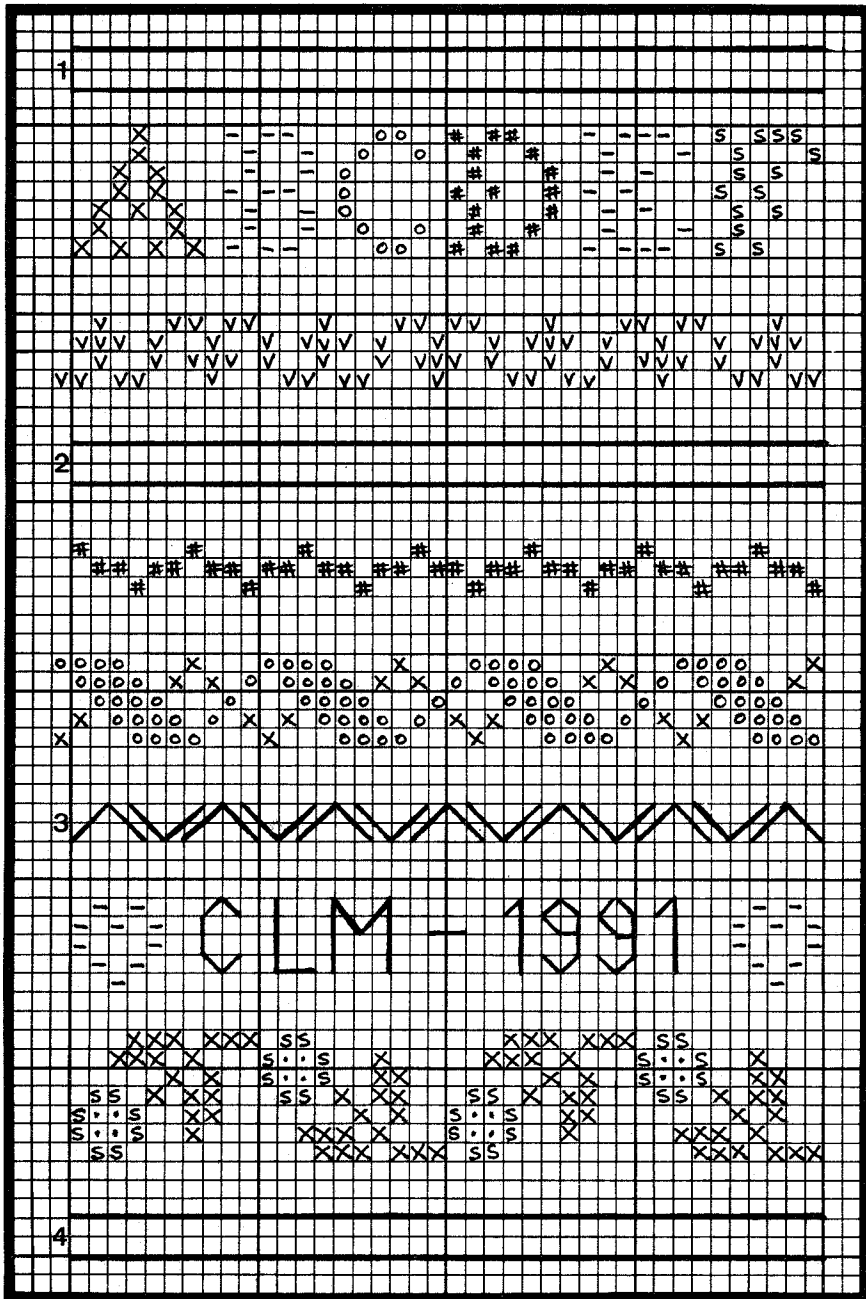
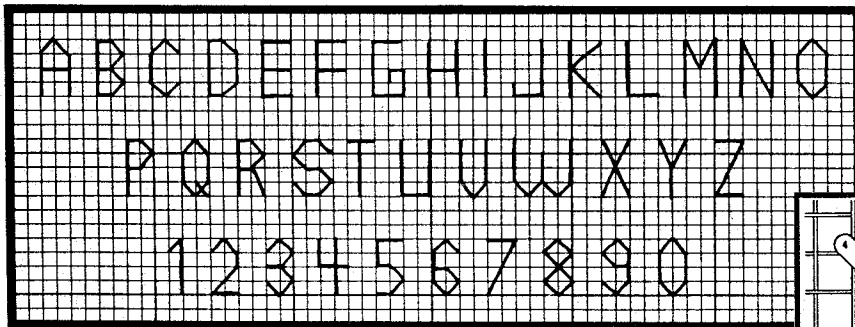


Mini Band Sampler



By Carolyn Meacham



Serendipity Designs

Distinctive Framing, Gifts & Needle Art

11301 International Drive, Richmond, Virginia 23236

	DMC	Color
#	932	blue
X	524	green
S	778	rose
-	3033	lt beige
.	ecru	ecru
o	3743	lavender
v	842	lt rose brown

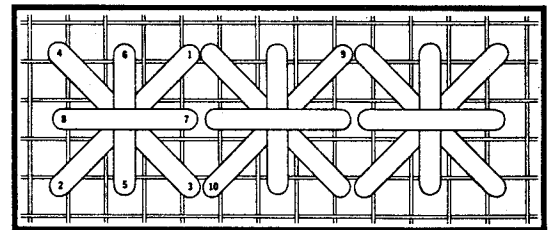
INSTRUCTIONS:

The sampler is stitched on blue pastel linen by Zweigart, over 2 threads. Each block on the chart represents 2 threads of linen for counting and spacing purposes. 2 ply floss used throughout.

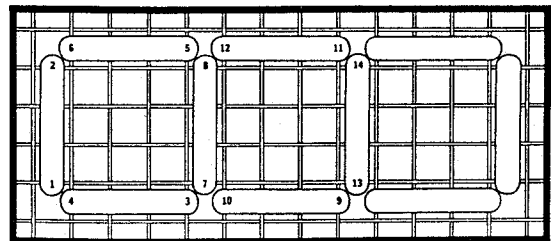
Numbers to the left of several of the bands on the chart indicate the stitches and colors used in these bands.

- BAND 1** - Smyrna Cross Stitch in 3743
- BAND 2** - Four Sided Stitch in ecru
- BAND 3** - Long Single Stitches in ecru
- BAND 4** - Long Armed Cross Stitch in 842

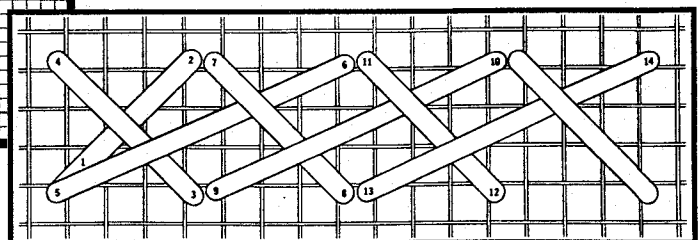
Initials are backstitched in 932.



BAND 1 - 3743



BAND 2 - Work with a firm pull which should draw together the threads of the linen. ecru



BAND 4 - 842